

GUNNER

FLATBED CNC CUTTERS

FAST

- Acceleration:4000mm/s².
- The X and Y axis are servo motors driven.
- The Z axis is driven by a silent voice coil motor.
- Carriage/Cutting system is in race car type.

Big Force

- Cutting force is sub-divided into 8 levels.
- Media thickness range:0.03-1mm.
- Free to cut 3M diamond grade reflective sheet.

Accuracy

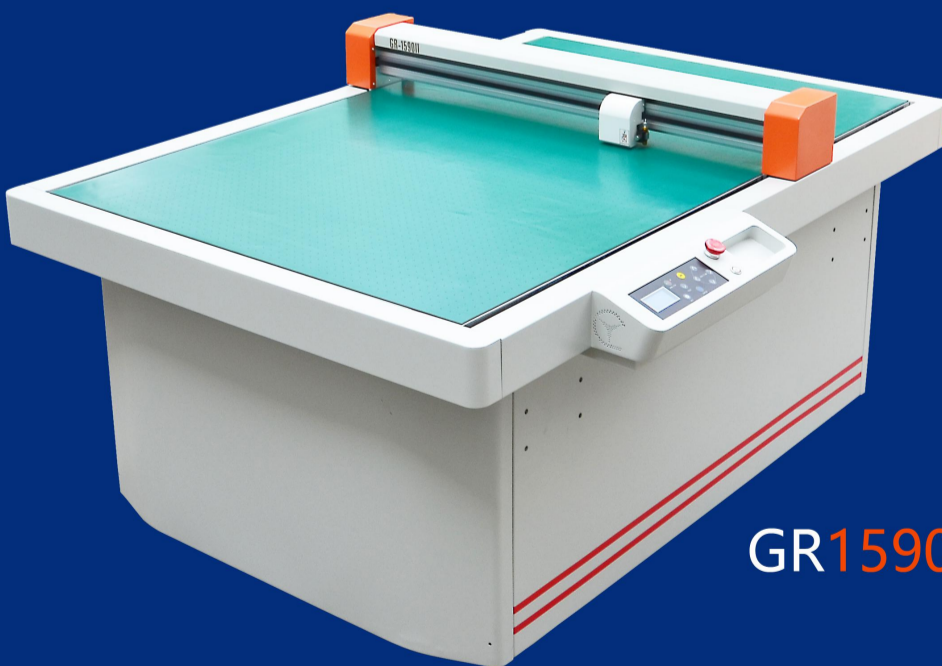
- Cutting system with accurate grating ruler is able to adjust cutting depth in every 0.01mm automatically in real time as material may go up down.



GR4532



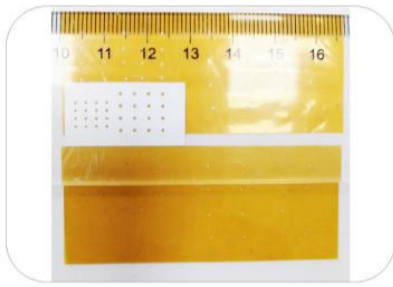
GR9060



GR1590

Introduction

GUNNER'S CNC flatbed cutters offer integrated solution for printing, signage, packaging proofing, pattern making, prototyping and small production runs of rigid packaging media and other sheet fed materials. Gunner's flatbed cutters are carefully designed for cutting high-precision and medium-heavy material crafting jobs and suitable for cutting intricate designs on cardboard, photo paper, vinyl sticker, photo-masking films, oil-board, sandblast resist rubber, PET (polyethylene terephthalate), PVC, polyamide, stiff paper, microflute board or industrial materials with precise adjustable cut pressure up to 600 gf.



Cut Min. Diameter 0.8mm Circle



Cut Min. 1x1mm letters



Cut stiff material

Material Available



Cardboard

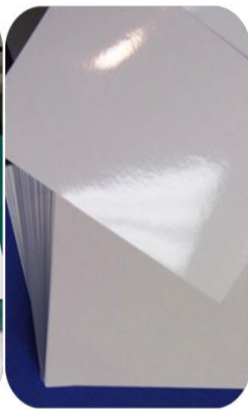


Photo Paper



Multiple Layer film



Auto Wrapping



3M Films



Magnetic Sticker



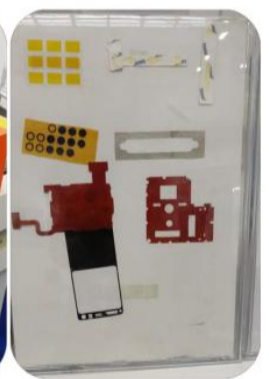
PVC



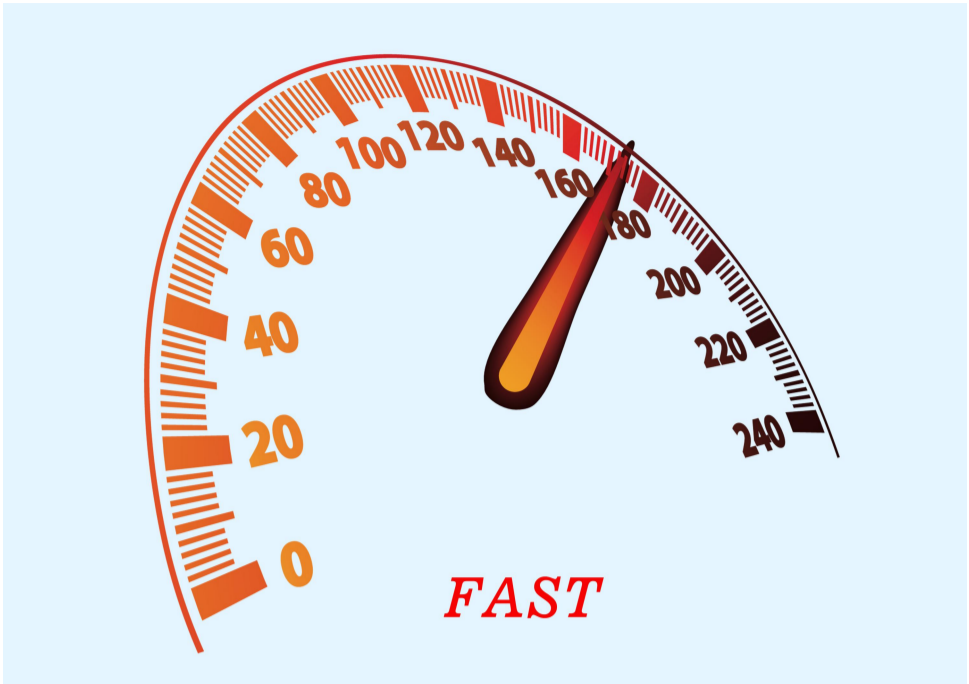
Vinyl Sticker



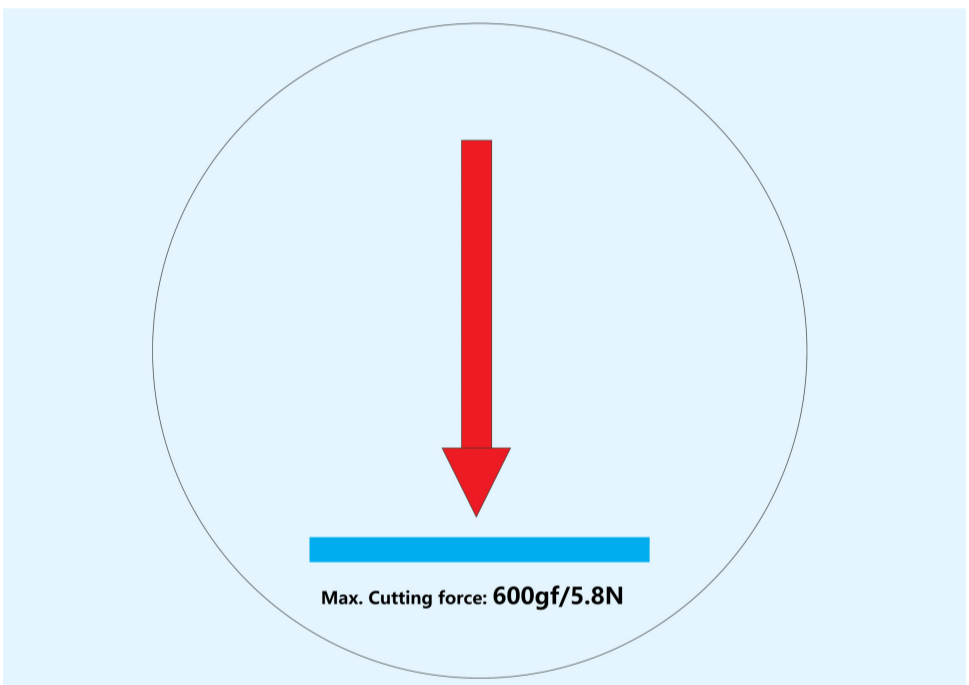
Mother Board Cover



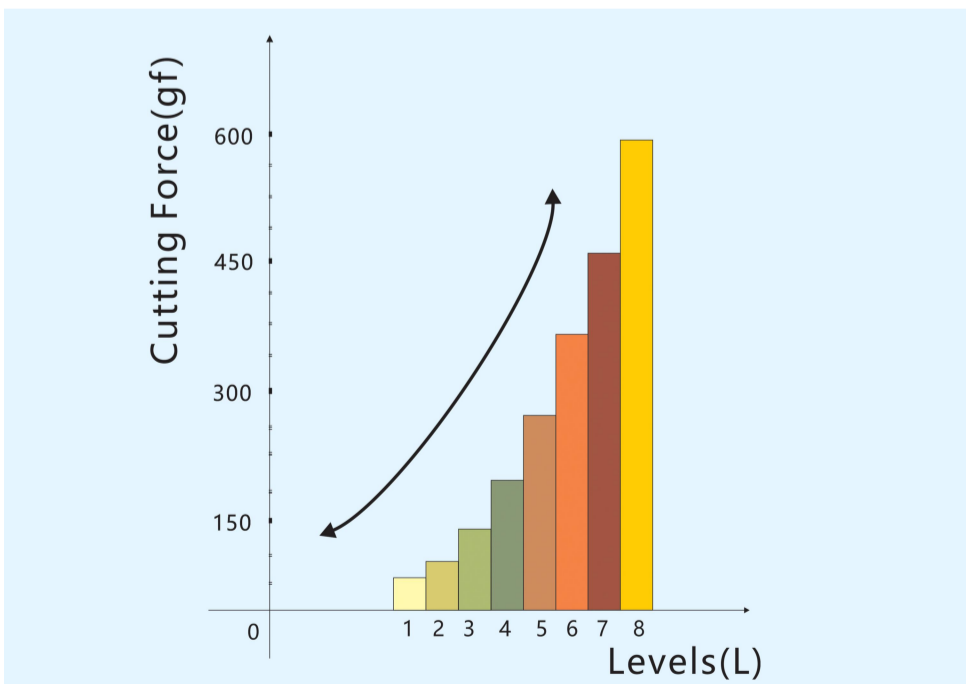
Standard Features



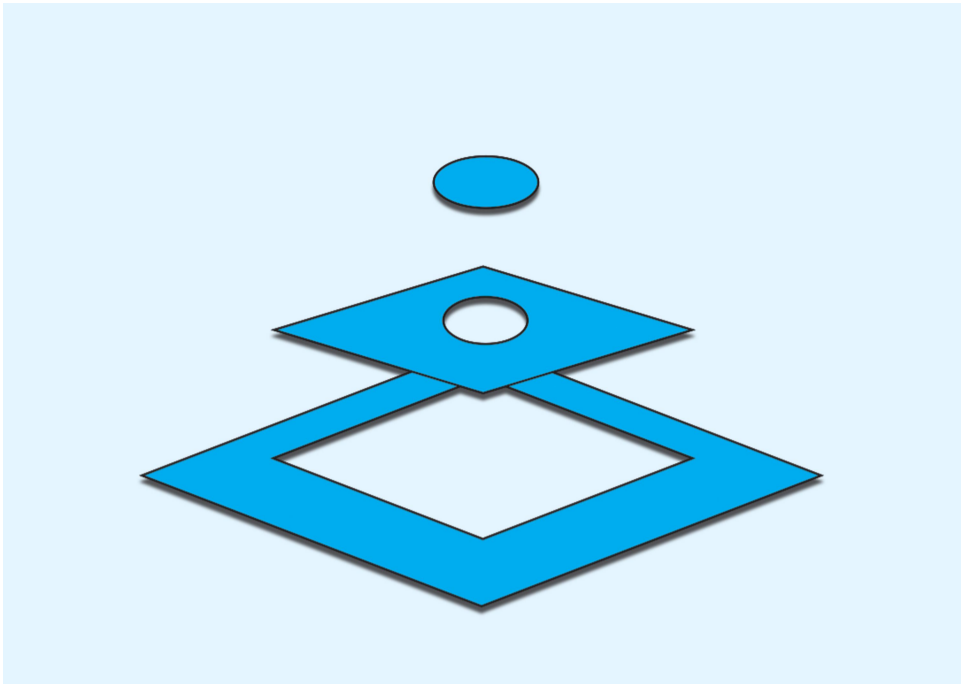
Acceleration: 4000mm/s^2
Max. Speed: 600mm/s
Advanced algorithm of motion controller, optimized tool paths, servo motor on X,Y, voice coil motor on Z and quality precision driving system, all of these elements make the machine moving faster and processing with more efficiency.



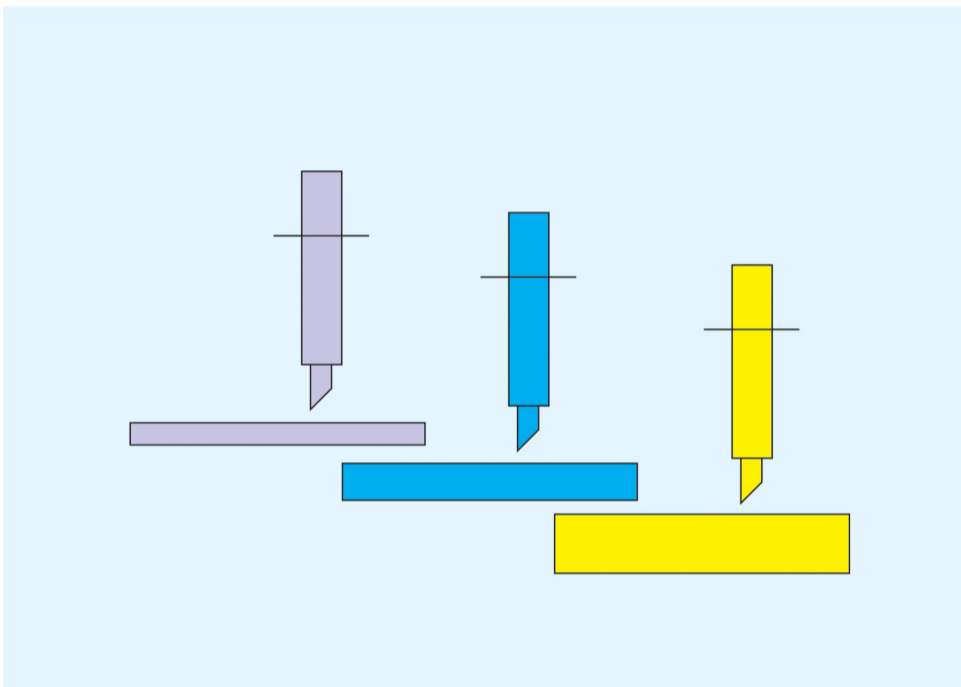
Max. cutting force: $600\text{gf} / 5.8\text{N}$
High torque very well managed by Gunner's CNC/controller, cutting force is output more linear. It is smooth to switch different levels of down force to each other.



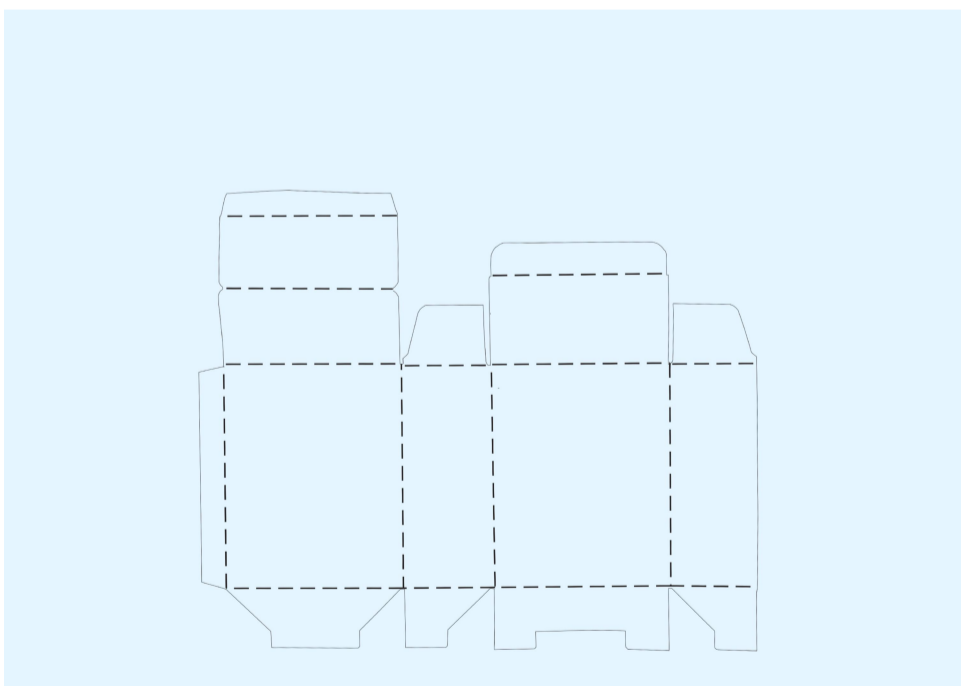
The cutting force is subdivided to 8 levels and different levels come with different colors, the processing order is corresponding to color order.



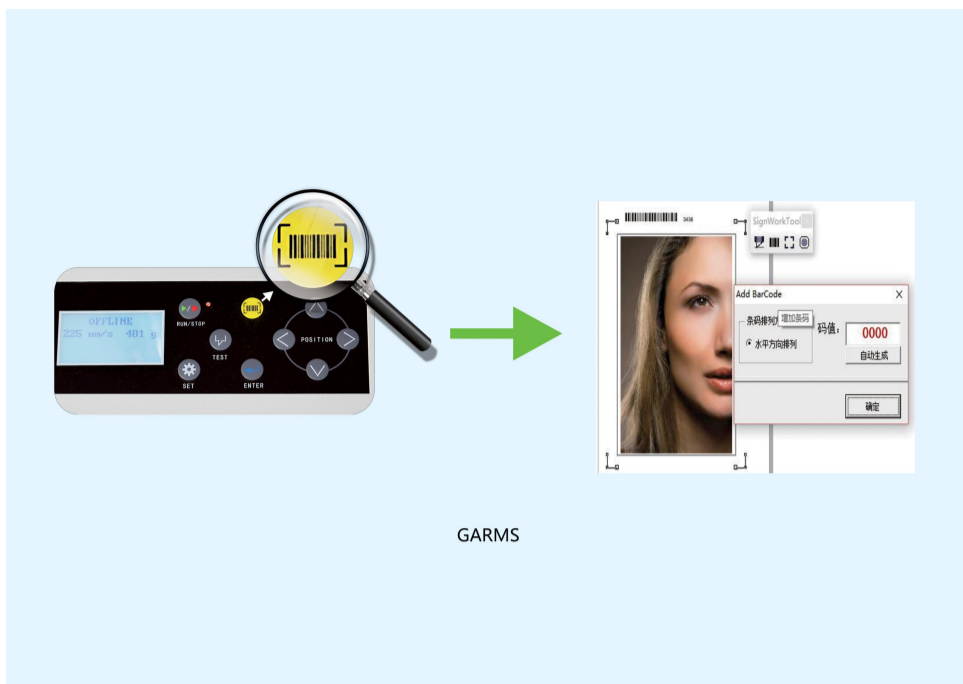
Half cut and or perforation cut functions are available,user is able to perform either half cut or perforation cut ,user can also execute both of them within every single processing cycle.



Different cutting forces are applied to cut material with multiple layers, different cutting forces are inter-changeable to each other automatically for different layers .



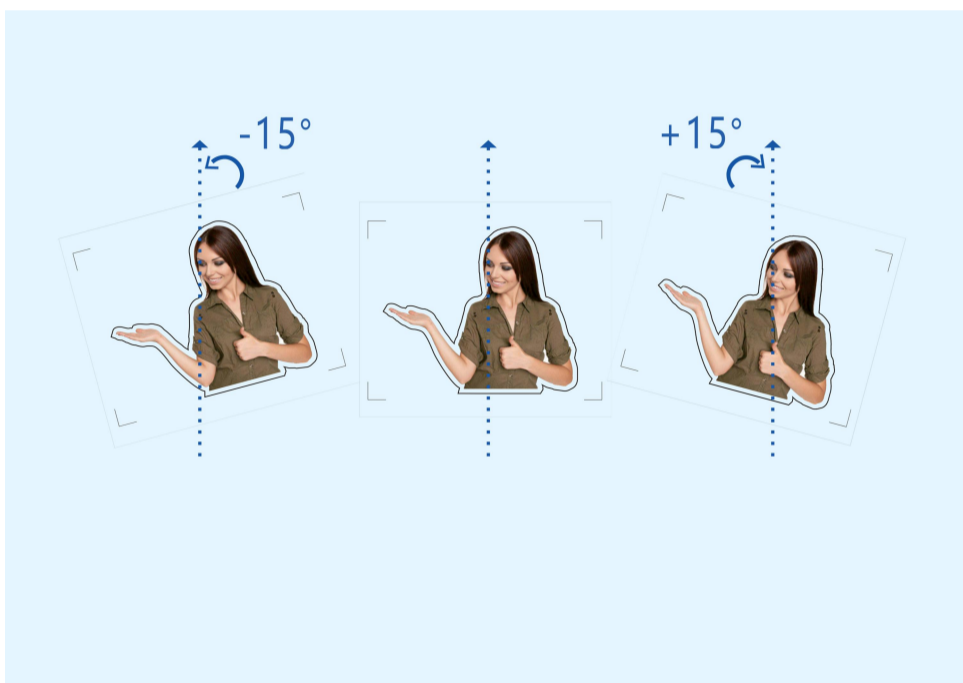
Dotted lines cutting is available with Gunner' s machinery, this feature is especially useful cutting films with 2 layers and kinds of paper.



GARMS

USB(U flash memory) / Bar-code function

One-click feature to identify the cutting job from each other by scanning the bar-code which is attached to cutting job. It is not required to connect the machine to computer when doing that, because Gunner machinery is able to read the bar-code/cutting job which is saved at a USB flash memory, which means more convenient off-line processing.



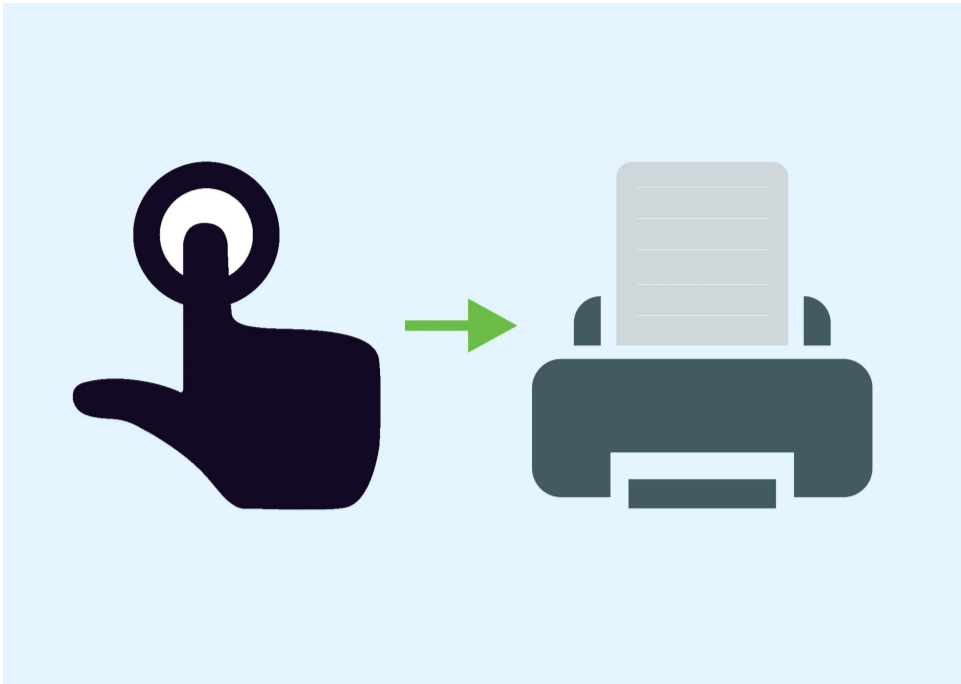
Advanced Registration Marks Sensor /ARMS

Gunner has his own software to generate contour in just one -click, and registration marks are setup conveniently as well. A Red laser sensor is applied to identify those marks quickly and then the contour cutting is ready to go.

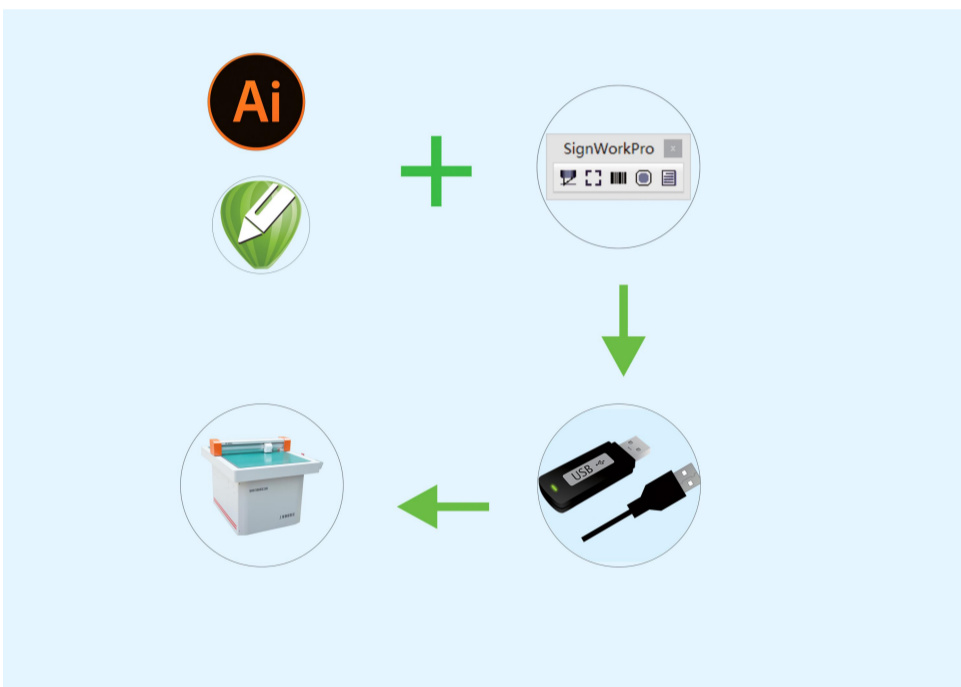
To identify the registration marks, it's no need to let the cross of red laser close to the center of the marks as much as possible manually but just put it around the mark, then the sensor goes to find the center of mark by itself. More importantly, operators just need to drive the sensor to the place around the first mark, then the machine goes to identify all of the marks by itself.

Fine adjustment of the relative position between cross of red laser and registration marks with software is available.

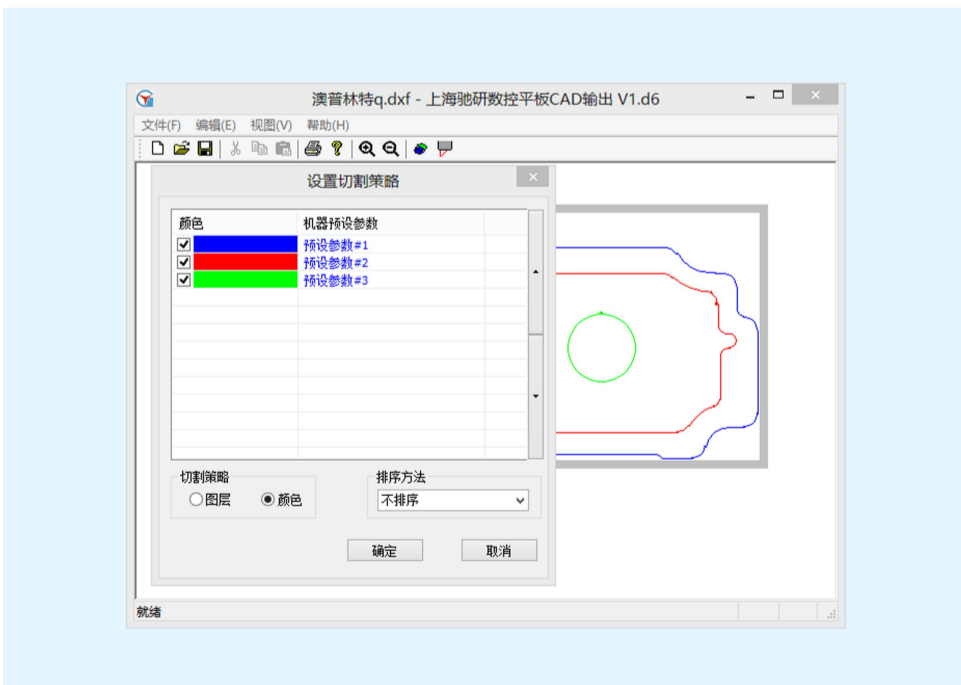
If material/contour is placed askew ($\leq 15^\circ$), the machine system is still able to work fine, so it is unnecessary to put material/contour always horizontally and vertically, this feature helps a lot to save time.



One-click to install print driver which is compatible with Window 32/64bit, it is able to send the cutting job by any CAD software that comes with printer feature.



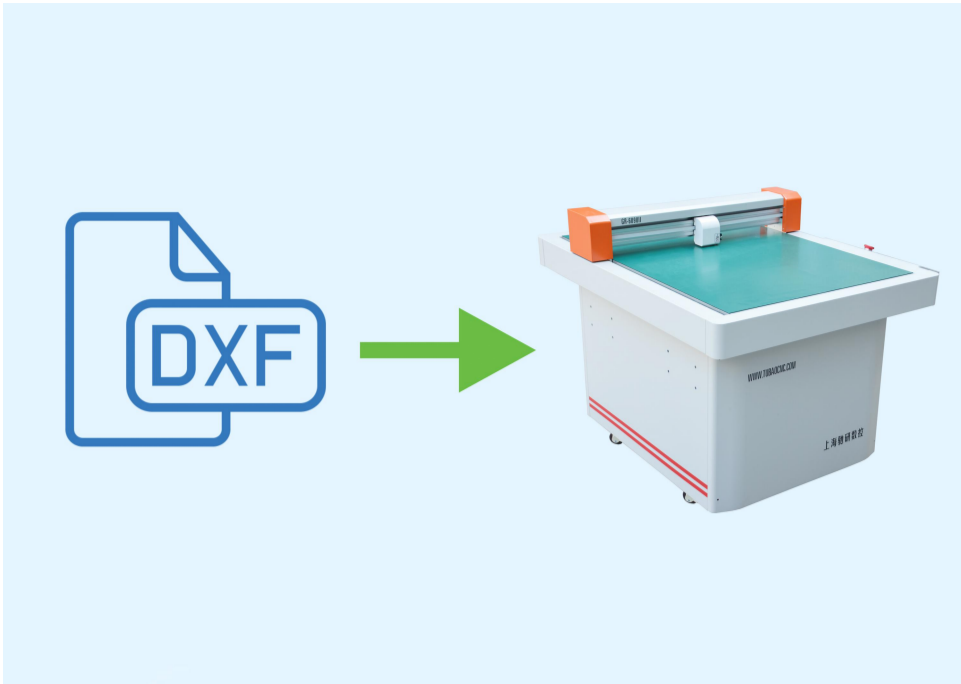
Signworkpro, one of Gunner's plugin software, is compatible with CorelDRAW and Adobe Illustrator, once the Signworkpro is embedded, the CorelDRAW and Adobe Illustrator are able to identify the Gunner machine automatically via USB interface, thus the communication is set seamlessly and the cutting job travels between them smoothly. Signworkpro and other software own by Gunner offer diversiform solutions for different industries.



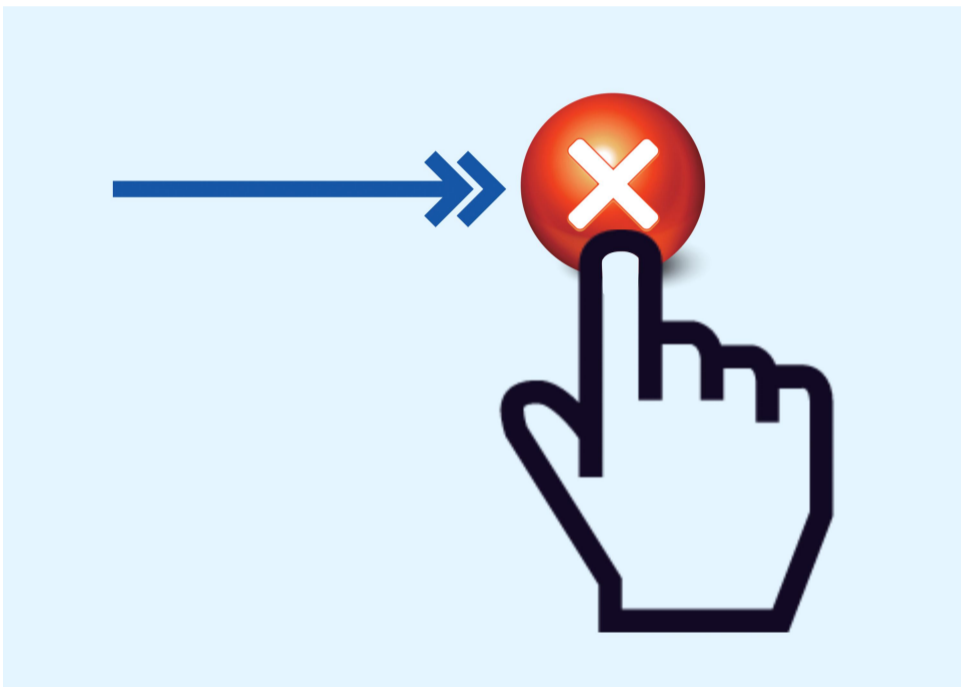
CAD Output Center

It is allowed to output multiple levels of cutting forces in one time, thus the half cut, perforation cut and cutting media with multiple layers are realized.

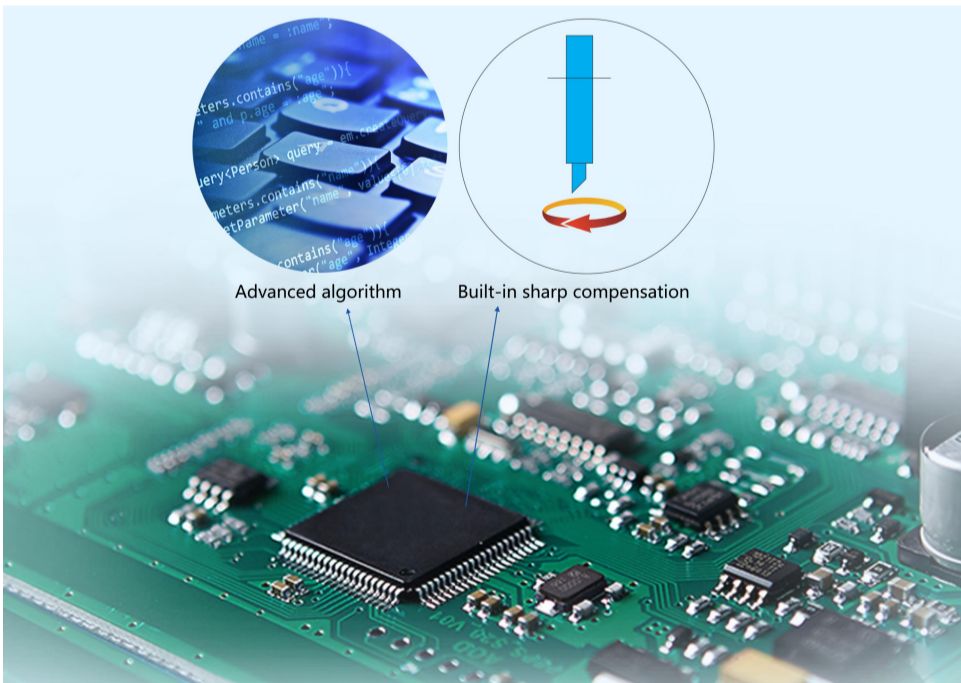
Advanced algorithm helps to optimize the tool paths, and then the work efficiency is improved significantly.



At CAD output center,operator is enabled to send the.DXF file to machine directly, while no need to transfer the file format.

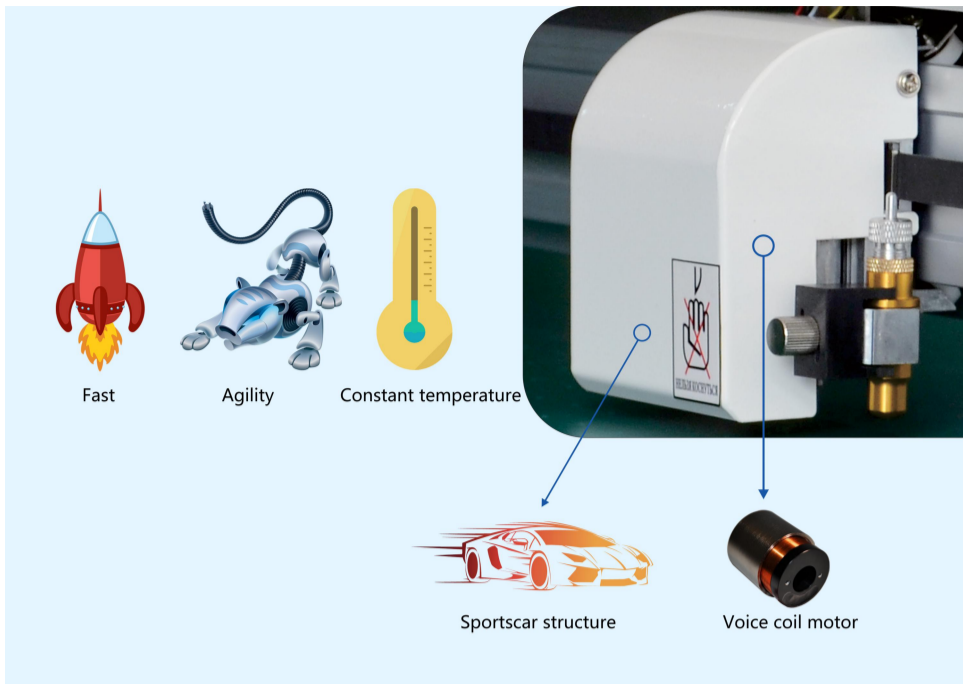


One-click deletion button for the currently print document.
Data is transmitted by USB flash memory,repeated operation is supported.

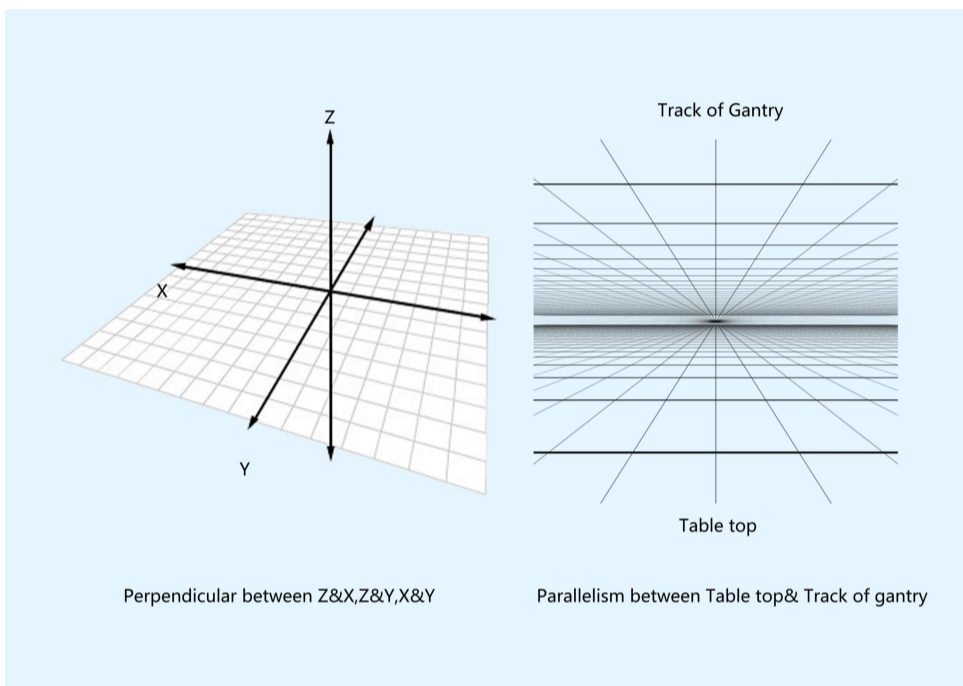


We program and make the core of the machine,both software and hardware.Gunner' s controller/CNC runs with advanced algorithm,easy to upgrade and custom-made for different applications for future as we own it.

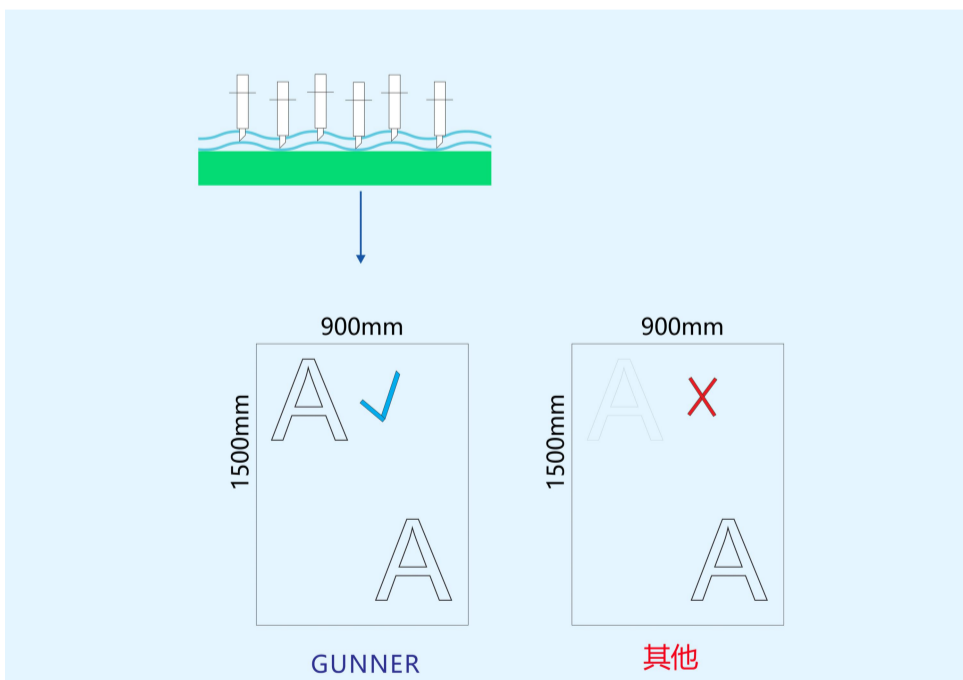
Unlike the others, our system makes sharp compensation by hardware (main board) instead of software(PC&CAD/CAM software), our machine works at sustainable high precision no matter what kind computer system or CAD/CAM software is taken.



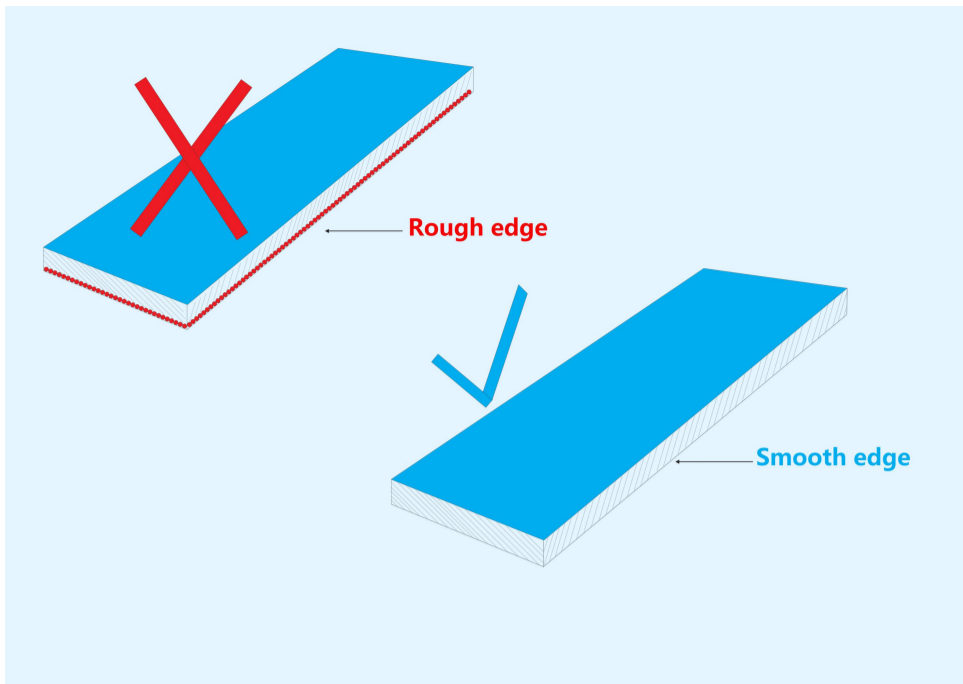
Carriage is one of the most important part of the machine. Taking the sport car structure, driven by silent voice coil motor, Gunner's carriage is featured as fast speed, more agility and no overheat for long-term non-stop operation.



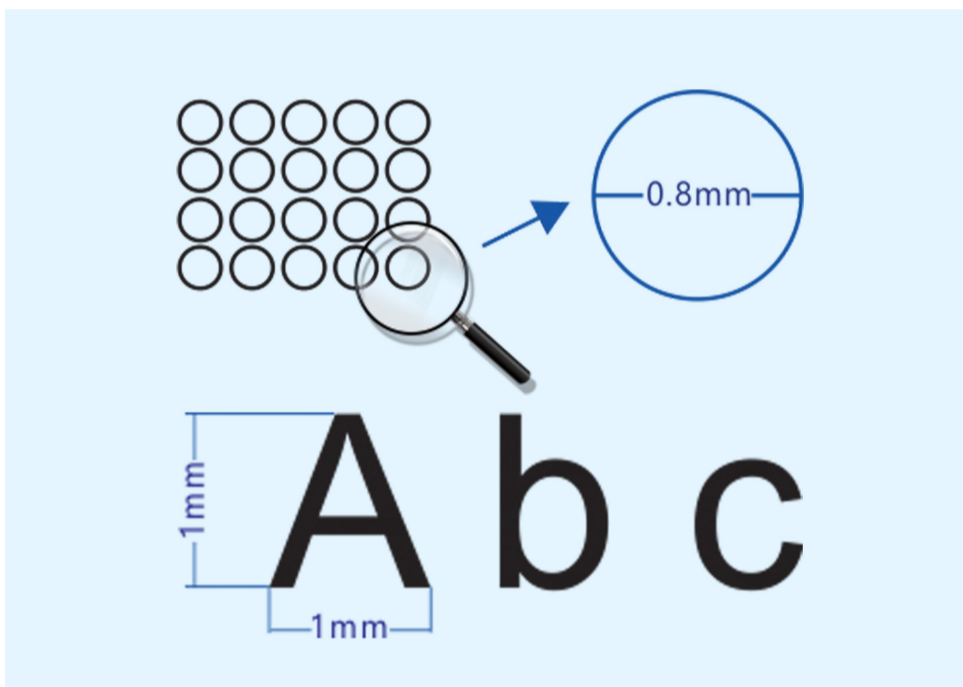
Industry leading technology is applied to calibrate the perpendicular between different axes and the parallelism between track of gantry and table top.



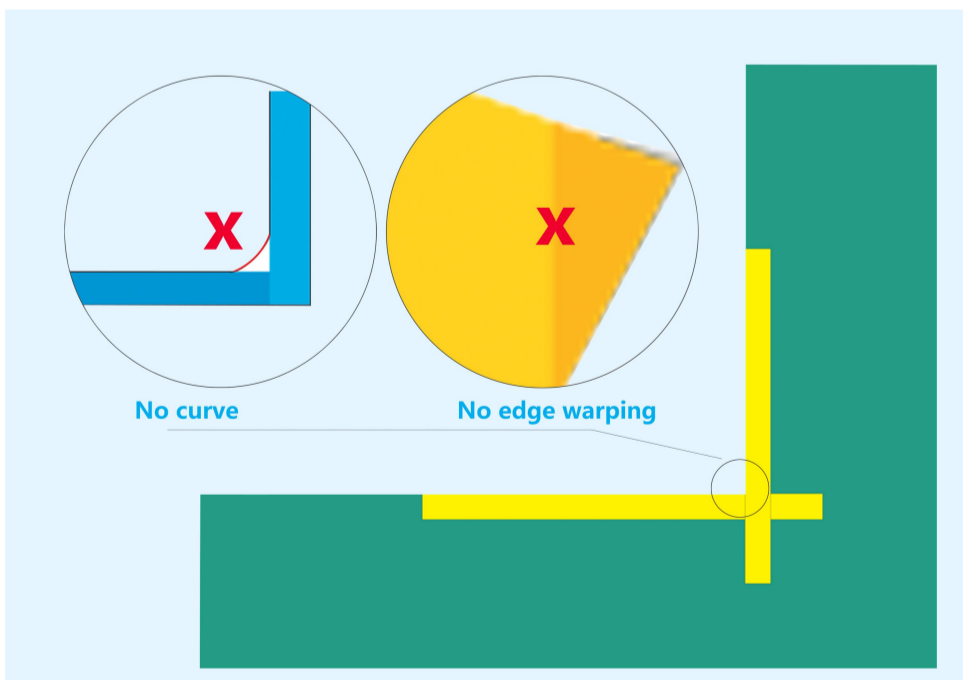
It is inevitable that the table top or material surface is not at the same height from point to point, we take grating ruler, a precise optical device, to measure the distance between blade tip and material surface in real time, and the cutting depth is adjusted in every 0.01mm by the controller in real time according to the values of distances measured. Subsequently, the blade travels up and down as material surface goes up and down in order to keep the same cutting depth at any position of that tool path across entire working size.



With the help of the precise cutting force management, the machined surface by Gunner cutter is smooth and clear.



The Gunner machine is featured as high precision, it is easy to cut circle with diameter as little as 0.8mm or letters sized 1x1mm, while the cutting edge is smooth, neat and no distortion, operator is able to tear off the scraps conveniently.



An accurate machine has to be able to cut the right angle sharply, with the work piece by Gunner cutter, people don't see any curve or edge warping.



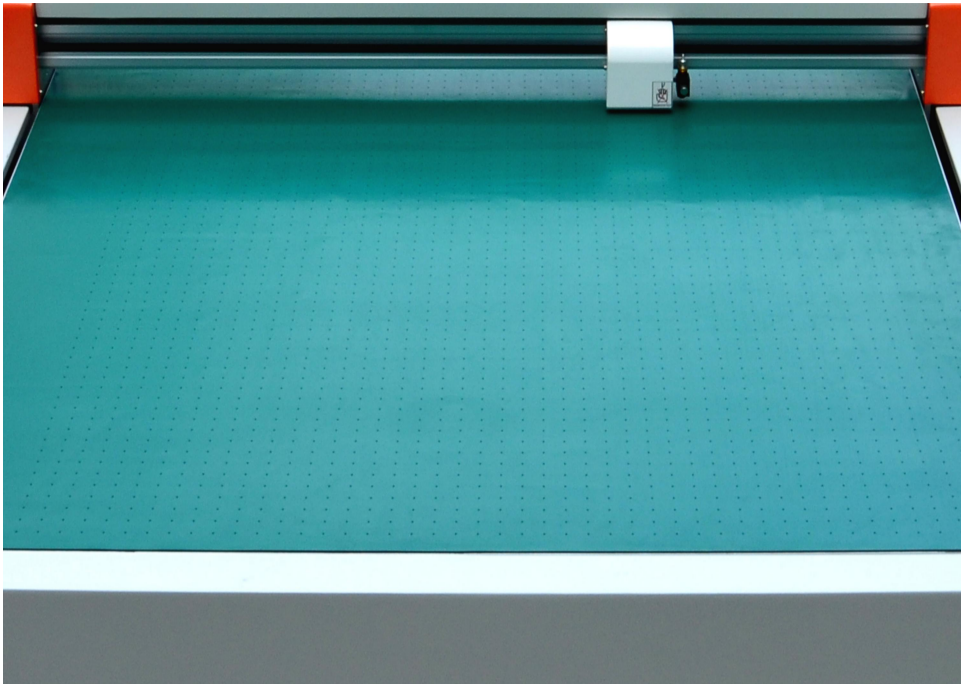
Thanks to the advanced controller, Gunner machine cut with high precision with the accurate coincide of start point and end point while no need any OVERCUT.



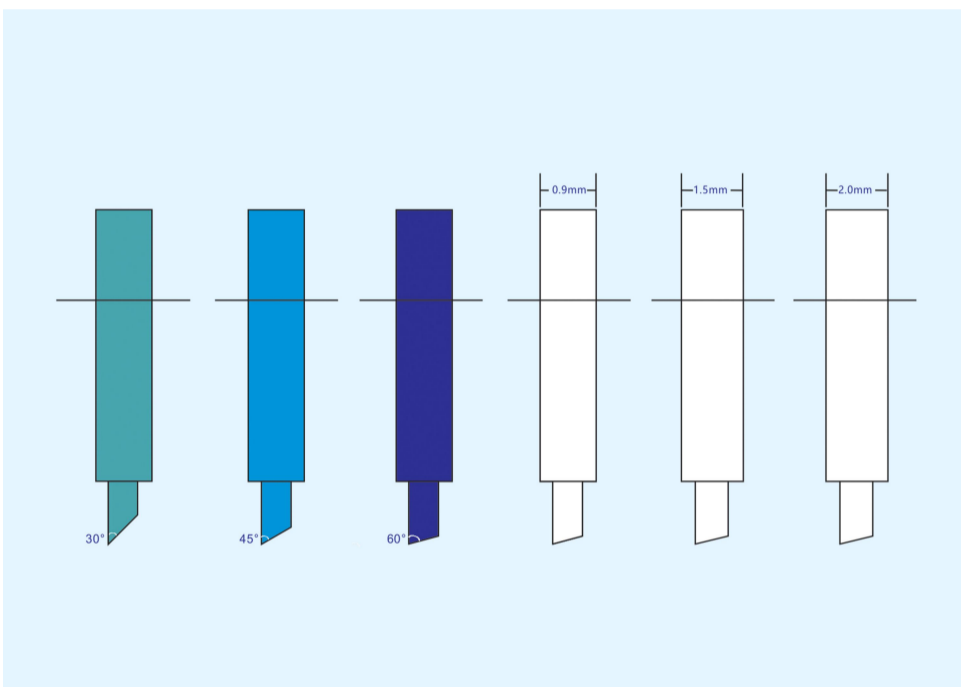
To eliminate the static interference, Gunner machine has gone through year-round tests in different environment of different seasons.



For more outstanding performance and long-term reliable working, We only use world class brand name components such as Japanese BANDO belt, Japanese MINEBEA bearing, Korean WON linear guide-ways, etc. This means that you can always source these components on Google from local and competitive suppliers.



There are more dense air inlets in the vacuum table to hold smaller sized media, and the vacuum pump offers high negative pressure, low noise and excellent reliability.



There are series of cutting blades available with our machine, operators choose different blades according to different situations.

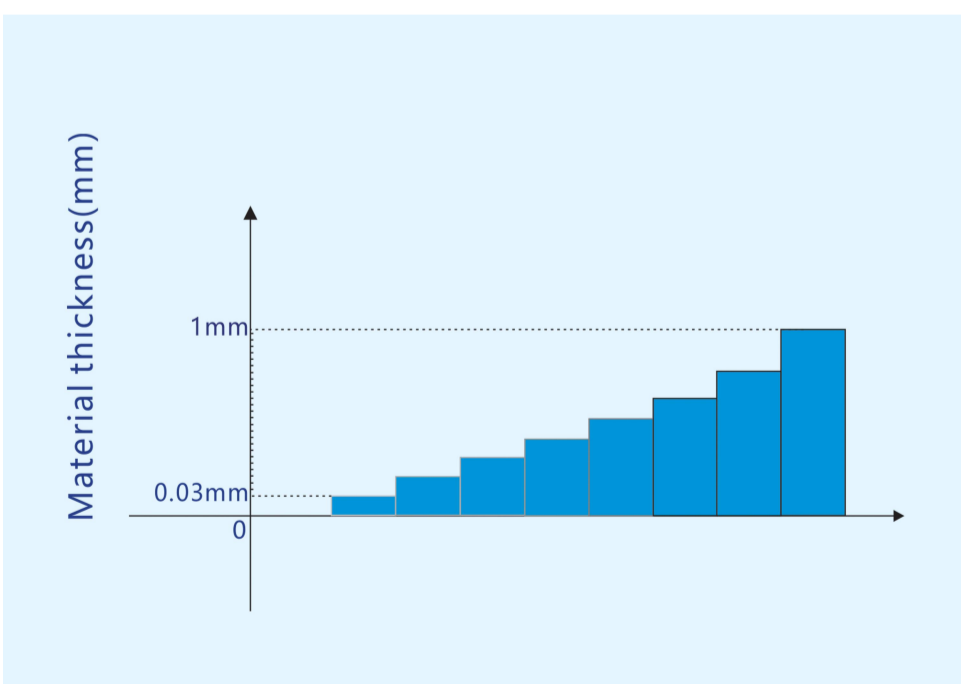
Angle:45° / Diameter:0.9mm for Vinyl media

Angle:45° / Diameter:1.5mm for Thick media

Angle:30° / Diameter:1.5mm for Thicker media or smaller character

Angle:45° / Diameter:1.5mm for High intensity reflective film

Ball pen is also available.



Gunner cutter is applicable with:

Materials with thickness 0.03-1mm.

Card paper $\leq 500\text{g}/\text{m}^2$

PVC thickness $\leq 0.7\text{mm}$

PET thickness $\leq 0.35\text{mm}$, and more materials....

Specifications

Model	GR4532	GR9060	GR1590
Working Size	450x350mm	900x610mm	1500x900mm
Cutting Depth	0.03-1mm		
Max.Cutting Speed	600mm/s		
Max.Cutting Force	600gf/5.8N, sub-divided into 8 levels		
Cutting Force Setup	Adjustable in every 1gf		
Min.Letter Size	1x1mm		
Drive	Servo		
Port in Standard	USB,RS-232		
File Format	HP-GL ,PLT		
Number of Tool Holder	one blade holder,one drawing pen holder		
Power Input	110-220v AC,50-60Hz		
Power Consumption	620w		
IOS	Win10/8/7/XP		
CAM Software	Singworkpro		
Method to Fix Material	Vacuum table and or Adhesive mat		
AAS	GARMS		
Package Size W-L-H	760x1050x600mm	1220x1350x1220mm	1520x1950x1220mm
Net/Gross Weight	40/55kg	90/160kg	220/300kg